

6. LAP SPLICES SHALL BE PROVIDED ONLY IN THE CENTRAL HALF OF THE COLUMN LENGTH. HOOPS SHALL BE PROVIDED OVER THE ENTIRE SPLICE LENGTH AT SPACING NOT EXCEEDING 150 MM CENTER TO CENTRE MORE THAN 50 PERCENT OF THE BARS SHALL BE SPLICED AT ONE SECTION. THE SPACING OF HOOPS SHALL NOT EXCEED HALF THE LEAST LATERAL DIMENSION OF THE COLUMN EXCEPT WHERE SPECIAL CONFINING REINFORCEMENT IS PROVIDED. (FIG-4)

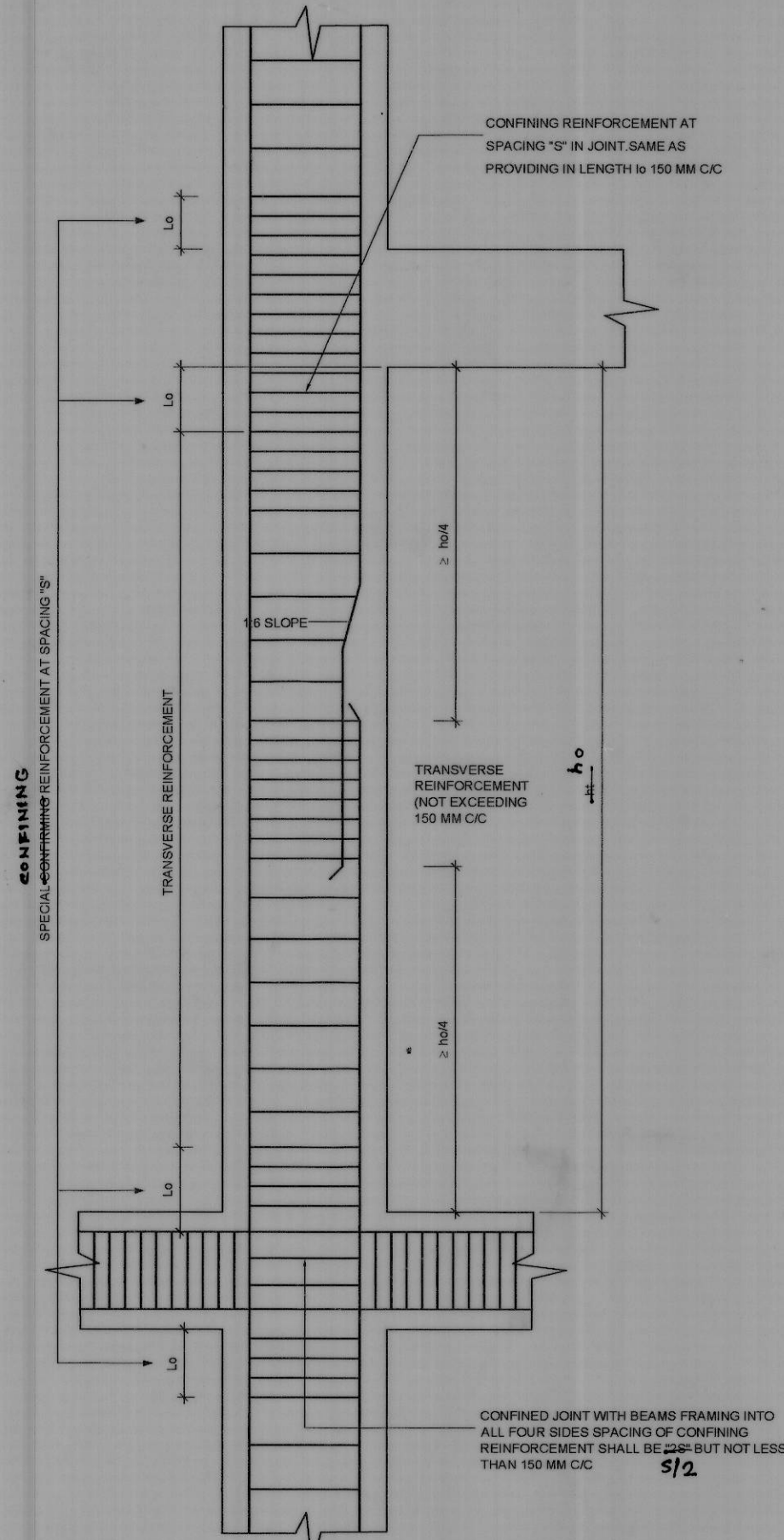


FIG.4 COLUMN AND JOINT DETAILING

2.	03-8-06	NOTE 6, LINE 2. FOR "CENTRE TO CENT MORE" READ "CENTRE TO CENTRE. NOT MORE"	M/S	Y.S.
1.	03-8-06	FIG 4. (i) FOR "ht" READ "ho" (ii) FOR SPECIAL CONFIRMING REINFORCEMENT READ "SPECIAL CONFINING REINFORCEMENT" (iii) FOR "SPACING OF CONFINING REINFORCEMENT SHALL BE '2S'" READ "SPACING OF CONFINING REINFORCEMENT SHALL BE 'S/2'"	M/S	Y.S.
SNO.	DATE	DESCRIPTION	SO. II	SO. I
			INITIAL	
REVISIONS				
DATE	31-3-06	CHIEF ENGINEER JALANDHAR ZONE		
DRN	RENUKA			
TCD				
CKD				
SCALE	AS SHOWN	SEISMIC PROVISIONS		
SHT. SIZE	A3			
 (DEVI SINGH) TECH. OFFICER AAD (ARCH)		DUCTILE DETAILING OF REINFORCED CONCRETE STRUCTURE		
 (YOGESH K SINGHAL) SE DIRECTOR (DESIGN) FOR CHIEF ENGINEER		DRG. NO.	SHEET NO.	
			7/8	
		DRG NO CEJZ / STD-216 / 06		